

|| श्री || **LAKSHMISHREE**

Gateway to your Financial Goals

Weekly Outlook: 14th Jun — 20th Jun 2026



BREAKOUT..!!

NIFTY OUTLOOK



Nifty ended the week with a powerful bullish marubozu candle after sweeping the lows of the previous four weeks, a classic liquidity grab that has likely trapped late shorts. The index opened near the low of the week and closed at the high, reflecting strong demand absorption and aggressive buying through the week. The sweep of multi week lows followed by a strong close significantly improves the short term structure and suggests that the recent correction may be transitioning into a recovery phase. A sustained move above 23675 would confirm bullish continuation and trigger fresh momentum toward the 23900 and 24000 resistance zone. On the downside, the sweep low near 23265 remains the key line in the sand for bulls. As long as this level holds, dips toward the 23400–23265 demand zone are likely to attract buying interest. Daily and lower timeframe moving averages have turned constructive and are aligning for a stronger upmove, while the current rally attempts to neutralise the influence of the falling weekly EMA.

Support: 23400, 23265

Resistance: 23675, 24000

Strategy : Buy on dips to 23500 for 23675-23800 with stop below 23425.



Anshul Jain

Head of Research

BANK NIFTY OUTLOOK



Bank Nifty displayed remarkable relative strength during the week, closing with a strong bullish marubozu candle and decisively breaching the highs of the previous five weeks. The wide range bullish close reflects aggressive demand and confirms a clear shift in short term market structure. Importantly, the breakout has occurred after a prolonged consolidation phase, increasing the probability of trend continuation. With the index now trading above key swing levels, there is little visible supply until the major weekly swing high near 57456, which represents the next significant hurdle for bulls. A sustained breakout and close above this level would confirm a higher timeframe breakout and open the path toward the 58500 zone. On the downside, the recently broken swing high near 56334 is expected to act as the first layer of support, reflecting a classic role reversal. Below that, the gap zone around 55700 remains a strong demand area that should cushion any short term pullbacks. Moving averages are turning higher across timeframes, while momentum indicators continue to strengthen, supporting the case for further upside.

Support: 56334, 55700

Resistance: 57456, 58500

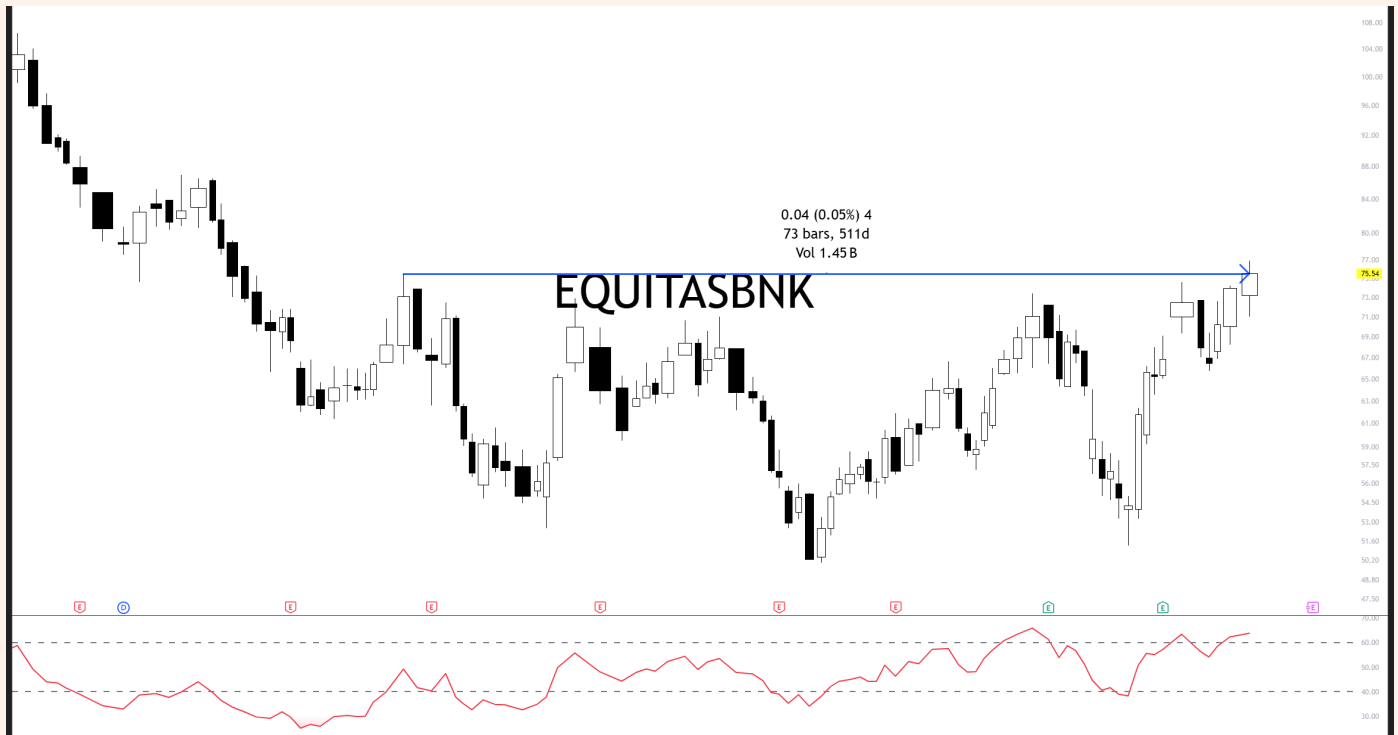
Strategy : Buy dips toward 56500-56334 with a stop below 56300 for an immediate upside of 57456.



POWER PLAY STOCK PICKS FOR THE WEEK



EQUITAS SMALL FINANCE BANK LTD .



Equitas Small Finance Bank is forming a bullish 73-week rectangle base, reflecting a prolonged accumulation phase marked by steady institutional participation. The stock is now approaching a crucial breakout zone near 76, where a high-volume move could trigger a decisive trend expansion. The lengthy base formation suggests significant supply absorption, improving the probability of a sustained upside move once resistance is cleared. Daily and weekly RSI readings have entered a strong bullish zone, typically associated with the early stages of momentum-driven rallies.

A breakout above 76 would likely attract fresh buying interest and open the path toward the initial target of 85. Follow-through price action post-breakout could generate substantial momentum as the stock emerges from its extended consolidation phase.

Strategy : Buy
Cmp : 75.5
Stop Loss : 72.5
Target : 85.

INDO COUNT INDUSTRIES LIMITED



ICIL has spent the last 73 weeks building a broad rectangle base, a structure that reflects prolonged accumulation and efficient absorption of supply. The quality of the base is reinforced by multiple institutional accumulation candles visible across both daily and weekly timeframes, suggesting strong hands have been steadily building positions. Price is now approaching a decisive breakout zone near 350, where a volume-backed move could trigger the next phase of the trend.

Daily and weekly EMAs are positively aligned beneath price and are poised to act as a launchpad for sustained upside momentum. A convincing breakout above 350 could attract fresh participation and propel the stock toward the 440 zone initially, while the breakout level becomes the key support reference.

Strategy : Buy
Cmp : 344
Stop Loss : 324
Target : 440

Netweb[®] TECHNOLOGIES



Netweb Technologies has successfully retested its bullish 34-week cup-and-handle breakout, printing a strong bullish hammer on the weekly charts. This price action suggests weak holders have been shaken out, while stronger hands have used the retest phase to accumulate. The stock continues to hold above the critical demand zone of 4450–4100, keeping the broader bullish structure firmly intact. The successful defence of the breakout area significantly improves the probability of trend continuation.

A sustained move above 4610 would confirm renewed momentum and open the path toward the 5400 zone. Daily and weekly RSI readings remain bullish, while moving averages across timeframes continue to support the uptrend and act as a launchpad for further gains.

Strategy : Buy
Cmp : 4587
Stop Loss : 4450
Target : 5400.



Gateway to your Financial Goals

Corporate Member of NSE, BSE, MCX, and Depository Participant with CDSL

CIN No U74110MH2005PLC157942 | BSE-3281 | NSE-12817 | MCX-55910 | DP:IN-DP-CDSL-490-2008 |
DPID:12059100 | SEBI Regn. No.: INZ000170330 | Mutual Fund: ARN-77739 |

Research Analyst: INH000014395

Registered Office:

Unit No 407, IV Floor, Marathon Icon , Ganpat Rao Kadam Marg, Mumbai-400013, Lower Parel

Contact No: (022) 43431818

Corporate Office:

Shree House C-29/61-5 Teliyabag Varanasi, UP 221002

Contact No: (0542) 6600000

Regional Offices:

Kolkata, Ahmedabad, Jaipur, Kanpur, Delhi, Ujjain.

THANK

YOU



Lakshmishree Investment and Securities Limited, a SEBI-registered Research Analyst with Registration No. INH000014935, is engaged in providing stockbroking, investment advisory, and research analysis services. The company publishes research reports and investment opinions on listed securities to assist investors in making informed financial decisions.

Business Activity and Nature of Service: Lakshmishree Investment and Securities Limited provide fundamental and technical research reports that are intended purely for informational and educational purposes. These reports are based on publicly available and credible sources; however, the company does not guarantee the absolute accuracy or completeness of the information. The research is analytical and independent, aiming to support investors' financial understanding.

Disciplinary: Lakshmishree Investment and Securities Limited declare that there are no material disciplinary actions or penalties imposed by SEBI or any other regulatory authority that impact its research analyst activities. This transparency builds trust and aligns with SEBI's ethical standards for regulated research entities.

Ownership and Conflict of Interest: Neither the company, its research analysts, nor their associates or relatives hold any financial interest or beneficial ownership of one percent or more in the securities of any subject company mentioned in its reports. Additionally, the firm affirms that there are no material conflicts of interest existing at the time of report preparation or publication.

Receipt of Compensation: Lakshmishree Investment and Securities Limited and its associates have not received any form of compensation from the subject company in the past twelve months for investment banking, merchant banking, brokerage, or any other services. The firm has not managed or co-managed any public offering of securities for the subject company. It has also not received any benefits or compensation from third parties in connection with research reports.

Relationship with Subject Company: No research analyst, associate, or relative linked to Lakshmishree Investment and Securities Limited has served as a director, officer, or employee of the subject company. The company or its associates have not engaged in market-making activities for any subject company mentioned within its research reports.

Use of Artificial Intelligence (AI): In accordance with SEBI's latest disclosure norms, the company ensures that any usage of Artificial Intelligence tools in preparing or analyzing research content is transparently disclosed to clients. AI-assisted recommendations—if any—undergo human validation before dissemination to ensure unbiased conclusions.

Disclaimer: The research reports of Lakshmishree Investment and Securities Limited are for informational purposes only and do not constitute an offer, solicitation, or personal investment advice. The company, its associates, and employees may, from time to time, hold positions in securities mentioned in such reports. Investors are strongly advised to rely on their independent judgment and consult qualified financial advisors before making investment decisions.